



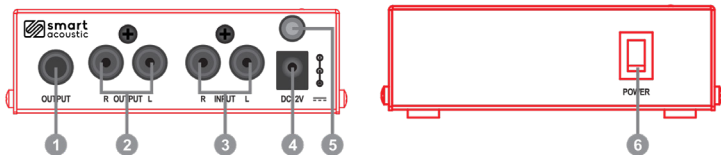
OPERATION MANUAL

SPP200 - ULTRA-COMPACT PHONO PREAMP

01. Features & Specifications

The **SPP200** is a Phono Preamp which accentuates your record player's output up to the correct line level, with one pair of RCA inputs, and outputs on both RCA and stereo 1/4" connectors. SPP200 ensures your record player operates correctly with the rest of your gear.

- Preamp Type: Solid State
- Number of Channels: 1
- Analog Inputs: 1 x stereo RCA
- Analog Outputs: 1 x stereo RCA, 1 x 1/4"



1. OUTPUT: 1/4" Tip-Ring-Sleeve jack for connection to a stereo amplifier, mixer or recording unit.

2. OUTPUT(L +R): Stereo RCA jacks for connection to a stereo amplifier, mixer or recording unit.

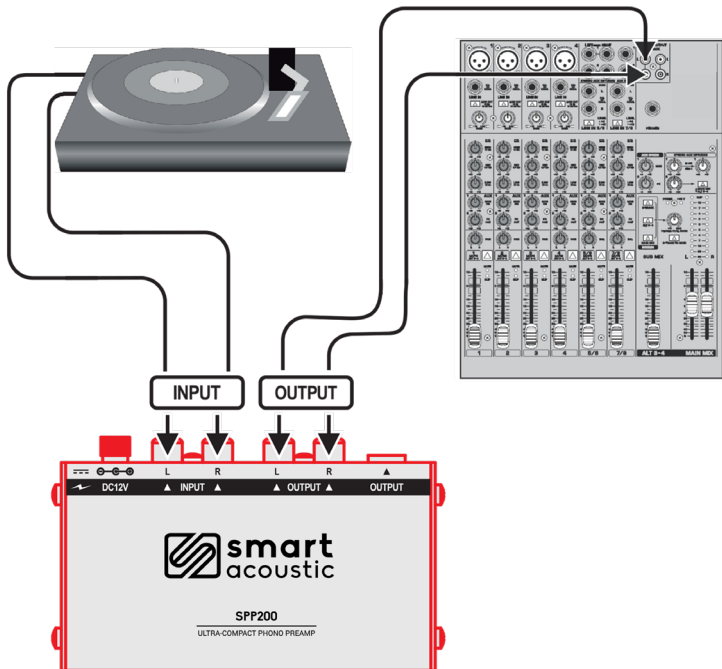
3. INPUT(L +R): Stereo RCA jacks for connection to the phono player.

4. POWER INPUT: 12 -16 Volts DC, tip negative jack.

5. GROUND CONNECTOR: Connects to the Ground of the phono player.

6. ON/OFF POWER SWITCH: Switch the SPP200 on or off.

02. Connections





www.smart-acoustic.com